



# Next-Generation Separation of Duties

A joint solution from KPMG and Fastpath



## Modern trends increase application access risk

Nearly two decades ago, the Sarbanes-Oxley (SOX) Act mandated separation of duties (SOD) to prevent a single person from controlling all aspects of a transaction. Yet, risk still plagues businesses, due in part to today's business trends: digital innovation, mergers and acquisitions (M&A), and remote workforces.

As businesses transform with a proliferation of best-of-breed, cloud-based systems, security professionals face more workflows, integration points, and mitigating controls that all have to work together across many applications. In addition, the M&A uptick resulting from low interest rates means both a consolidation and integration of roles—leading to SOD complexities and deficiencies that leave companies vulnerable to employee fraud and error. Even the remote workforces ushered in by COVID-19 bring greater technology security risk.

Traditionally, SOD is siloed with embedded controls to monitor a single application such as an enterprise resource planning (ERP) system. Monitoring for business processes that span multiple apps is often done manually. Conducting audits or deconstructing fraud events proves these missed links and unrealized exposures elevate risk. Fortunately, KPMG LLP (KPMG) and Fastpath can help.



## A joint solution for multiplatform separation of duties

KPMG and Fastpath have combined their strengths in the identification and testing of controls to help public and private companies transform their SOD monitoring and compliance for multiplatform, hybrid environments.

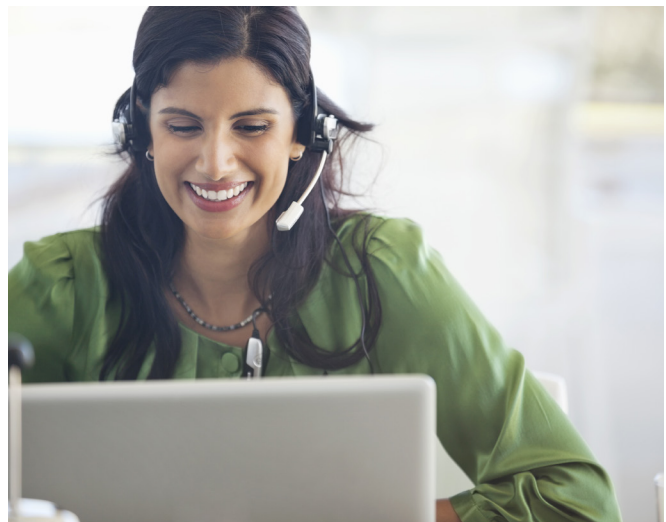
Fastpath technology enables cross-application SOD monitoring across more than 20 widely available applications—all at a budget-friendly price point and with flexible deployment options. KPMG brings a dedicated team of professionals focused on SOD assessments and assisting with the implementation of Fastpath software solutions.



## Fastpath: Managing application access risk in complex IT environments

With more than 1,000 customers in over 30 countries, Fastpath supports public and private global enterprises of all sizes with an award-winning platform for security access, SOD monitoring, and compliance.

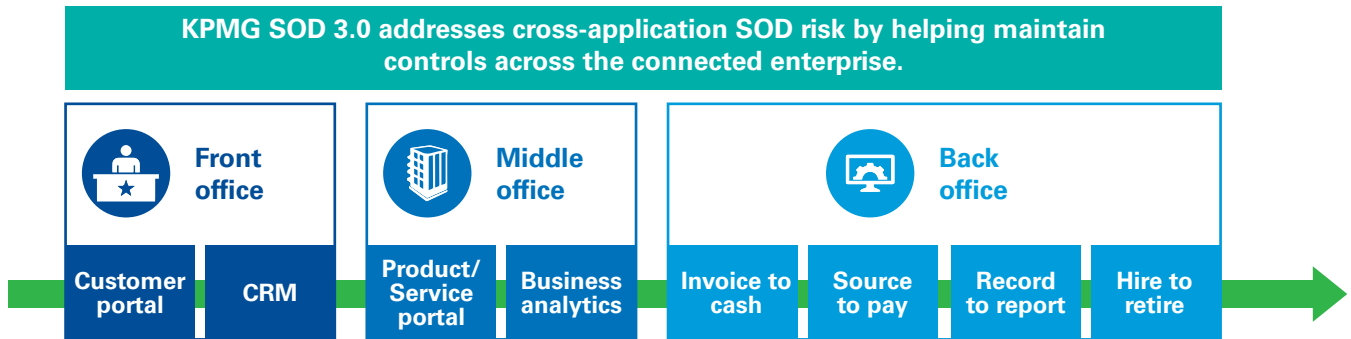
The Fastpath Assure suite of tools provides innovative, intelligent, and automated monitoring of access controls and enterprise access risk. Solutions address audit, identity, and SOD by user, role, and privilege down to the lowest levels of access. Fastpath technology helps companies gain actionable intelligence about their access risk in dynamic business environments.



## KPMG: A framework for next-generation, cross-application separation of duties

KPMG has advised companies how to design and implement effective application security and SOD programs for more than two decades. With its SOD 3.0 framework, KPMG combines deep skills in risk identification and monitoring and understanding regulatory requirements, advanced digital solutions, and change management into a powerful SOD capability.

This next-generation approach takes a cross-application view of cloud application security and uses predefined role definitions aligned with front-, middle-, and back-office business processes. These roles are designed to work with application controls and address data security, user access administration risk, and compliance requirements. They adapt to changing business needs, helping to protect the organization long after they are put into place.



### Delivering value with separation of duties across applications

Leveraging Fastpath Assure technology, KPMG offers a five-step process to evaluate needs, implement strategy and technology, and continuously improve SOD programs. The result is a scalable application security tool with automated access and SOD analysis that drives operational efficiency and lowers overall cost of ownership.

KPMG professionals guide you through the five steps to next-generation SOD 3.0:

- **Vision.** We work side by side with you to assess your needs and goals, then we develop a target operating model (TOM) aligned with corporate strategy.
- **Validate.** Based on a thorough risk assessment and prioritization, we validate the solution design and develop an implementation roadmap that includes final solution design.
- **Construct.** We configure and test the Fastpath platform, delivering functionality that allows you to monitor access controls and risk across all business transactions.
- **Deploy.** We integrate Fastpath's technology solution with the TOM to create a sustainable SOD program with cross-application monitoring for cloud and on-premises systems.
- **Evolve.** Once the Fastpath solution goes live, we work with you to put processes in place to continually improve, adapt, and scale as the threat landscape changes.

The joint offering includes more than 20 proprietary rule sets developed across a mixture of cloud and on-premises applications. The library contains major ERP packages such as SAP S/4HANA, Oracle, Workday, Microsoft Dynamics, PeopleSoft, and NetSuite, as well as cloud applications such as Coupa, Ariba, Salesforce, and SuccessFactors. Additionally, KPMG and Fastpath continuously develop and update industry-specific rule sets that offer access controls tailored to your sector.

### Takes steps to reduce risk, increase efficiency

Managing application access across cloud and on-premises platforms within an enterprise-wide, sustainable SOD framework is a complex problem. No matter where your company is in its risk evolution, KPMG and Fastpath can guide you through the development and maintenance of a modern SOD program.

Contact us to learn more about workshops that assess your application access needs and help you build a business case for cross-application SOD.

## Contact



**Mick McGarry**  
**Security and Controls**  
**Solution Lead**  
 KPMG LLP  
**P:** 214-840-8249  
**E:** hmcgarry@kpmg.com

Some or all of the services described herein may not be permissible for KPMG audit clients and their affiliates or related entities.

[kpmg.com/socialmedia](https://kpmg.com/socialmedia)



The information contained herein is of a general nature and is not intended to address the circumstances of any particular individual or entity. Although we endeavor to provide accurate and timely information, there can be no guarantee that such information is accurate as of the date it is received or that it will continue to be accurate in the future. No one should act upon such information without appropriate professional advice after a thorough examination of the particular situation.

© 2021 KPMG LLP, a Delaware limited liability partnership and a member firm of the KPMG global organization of independent member firms affiliated with KPMG International Limited, a private English company limited by guarantee. All rights reserved. The KPMG name and logo are trademarks used under license by the independent member firms of the KPMG global organization. NDP238580-1A