



KPMG Asset Management Platform

Real Estate Investment Trusts (REITs)



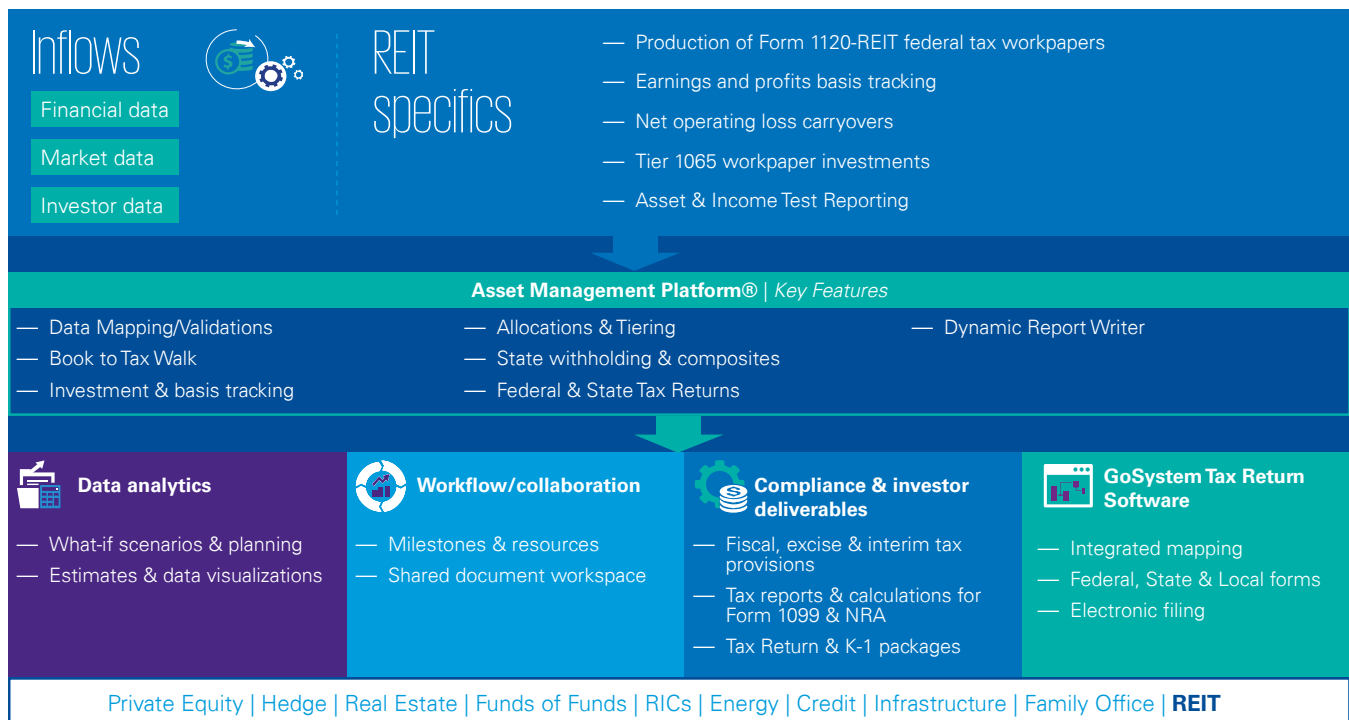
Pioneering the automation of tax compliance and planning with innovative technology.

The demands on the chief tax officer are growing and now technology is available to assist and enable significant improvements.

KPMG's Asset Management Platform is leading-edge technology that can help you reimagine cost-effective, innovative ways to execute tax compliance and planning. Informed by our extensive, in-depth tax knowledge of real estate, our Asset Management Platform enables efficiency and transparency, and helps normalize big data so you can save time, improve accuracy, and discover new tax value-adds for your organization.

In an environment of accelerated complex needs, REITs require an operating environment that offers:

- Complete transparency into the status of tax deliverables and the capability to drill down into calculations (not a black box)
- Reduced risk of missing tax compliance and investor reporting deadlines
- Increased operational efficiencies across all aspects of tax compliance (data collection, creating reports, and tax calculations)
- Shared access for client, KPMG, and authorized third parties
- Reduced rework time and enhanced reporting derived from one tax technology platform supporting both federal and state
- Improved decision support enabled by scenario planning, modeling, estimates, and data analytics
- Removal of constraints on business growth and profitability by replacing manual processes and legacy systems..

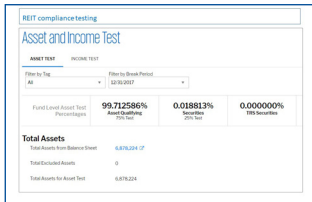


Key system attributes

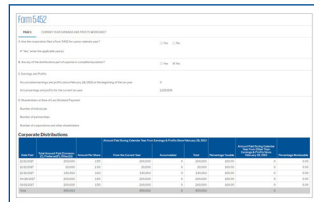
- Data/document sharing and collaboration
- Workflow/project task tracking
- Dynamic asset and income test mapping
- Automated tiering in multi-level structure
- Integrated federal and state calculations
- Powerful, easy-to-customize report writing
- Graphic data visualizations for decision support

KPMG Asset Management Platform provides:

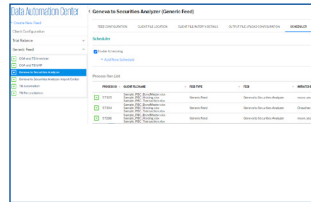
Asset and income diversification testing



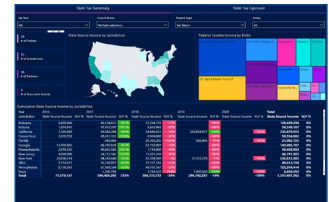
Nondividend distribution analysis



Data Automation



Business intelligence



Our people serving you

KPMG's Asset Management Platform, coupled with our tax experience serving REITs, partnerships, and Regulated Investment Companies (RICs) and executing consistent processes, can help keep your compliance, planning, and reporting on track.

The partners and professionals of KPMG's Asset Management Services practice have extensive experience helping numerous REIT, partnership, and RIC structures overcome their unique tax challenges. Working with our State and Local Tax and Washington National Tax teams, we help you realize tax advantages and maintain compliance by adding clarity through:

- Modeling
- Transactions
- Entity formation structuring
- Tax planning
- Legislative and regulatory developments.

As part of the delivery model, a member of the tax technology team will be available to you throughout the transition planning, client onboarding, and service stages. Some of the key tasks that will be performed during your onboarding include:

- Understanding your current process, data, and systems
- Identifying key milestones to track
- Reviewing and importing your entity data
- Reviewing system-generated organization charts for accuracy
- Tailoring reports to serve your management team, as well as shareholder and investor demands.

For additional information including a demonstration of KPMG's Asset Management Platform, take a tour of our interactive website at visit.kpmg.us/AMP. For insights from our Asset Management practice, visit us at home.kpmg/us.

Contact us

Yesenia Scheker
Partner, Global Tax Leader,
Building, Construction & Real
Estate
T: 212-954-3509
E: yscheker@kpmg.com

Charles Ferentinos
Partner,
Tax Technology
T: 201-307-8093
E: cferentinos@kpmg.com

Some or all of the services described herein may not be permissible for KPMG audit clients and their affiliates or related entities.

kpmg.com/socialmedia



The information contained herein is of a general nature and is not intended to address the circumstances of any particular individual or entity. Although we endeavor to provide accurate and timely information, there can be no guarantee that such information is accurate as of the date it is received or that it will continue to be accurate in the future. No one should act upon such information without appropriate professional advice after a thorough examination of the particular situation.

© 2021 KPMG LLP, a Delaware limited liability partnership and a member firm of the KPMG global organization of independent member firms affiliated with KPMG International Limited, a private English company limited by guarantee. All rights reserved. The KPMG name and logo are trademarks used under license by the independent member firms of the KPMG global organization. NDP186894-2E