

Protect. Transform.

KPMG Powered Enterprise | Cyber enabled by Okta

June 2020

To disrupt, you must transform

CEOs are no longer looking at cyber risk as a separate topic. More and more, they have it embedded into their overall change programs and are beginning to make strategic decisions with cyber risk in mind.

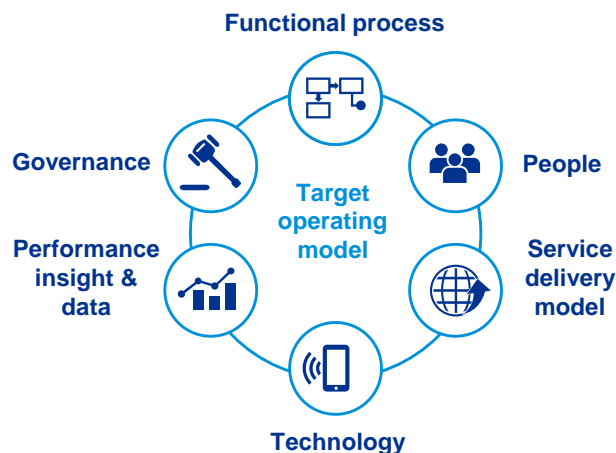
Seventy-two percent of U.S. CEOs agree this year that “strong cybersecurity is critical to engender trust with our key stakeholders,” compared with 15 percent last year.¹

CISOs have important questions

- Is it safe to move my identity and access management (IAM) capabilities to the cloud?
- Can I align my application security strategy with industry standards?
- Does my access management solution meet the needs of my business?
- Is my organization tracking pertinent security and risk indicators?
- How do I ensure my cyber access management solution is meeting my modern security needs?

Powered Cyber accelerates IAM transformation

At the heart of Powered Cyber, the KPMG platform for IAM transformation, is a prebuilt target operating model that complements Okta in the cloud.



Powered Cyber enabled by Okta is an outcome-driven functional transformation proposition for the modern CISO organization that prepares and protects your business for the digital future.

KPMG professionals understand the challenges with increased data complexity, lack of process standardization, and ineffective governance of service deployed for access management programs. The Powered Cyber offering can help organizations better respond to risk reduction requirements and auditor expectations.

Effective IAM serves as a foundation for cybersecurity programs. With the Powered Cyber offering, we bring together our experience of delivering transformation programs in IAM with the tested Powered Enterprise methodology to deliver accelerated and sustainable change. Through accelerated delivery of IAM controls and capabilities, Powered Cyber can help enable business outcomes and demonstrate rapid reduction of cybersecurity risks for your organization.

It's not what you put into the cloud that matters, but what you get out of it

Powered Enterprise | Cyber:

- Provides adoption through standardization
- Replaces tactical processes
- Formalizes the process taxonomy and governance model for IAM services
- Is solution focused instead of being cost or software package focused
- Provides diagnostics to drive better predictability of ROIs
- Provides standards-based integration allowing rapid adoption of services

1. KPMG CEO Outlook Survey, KPMG International, 2019

Going beyond efficiency gains

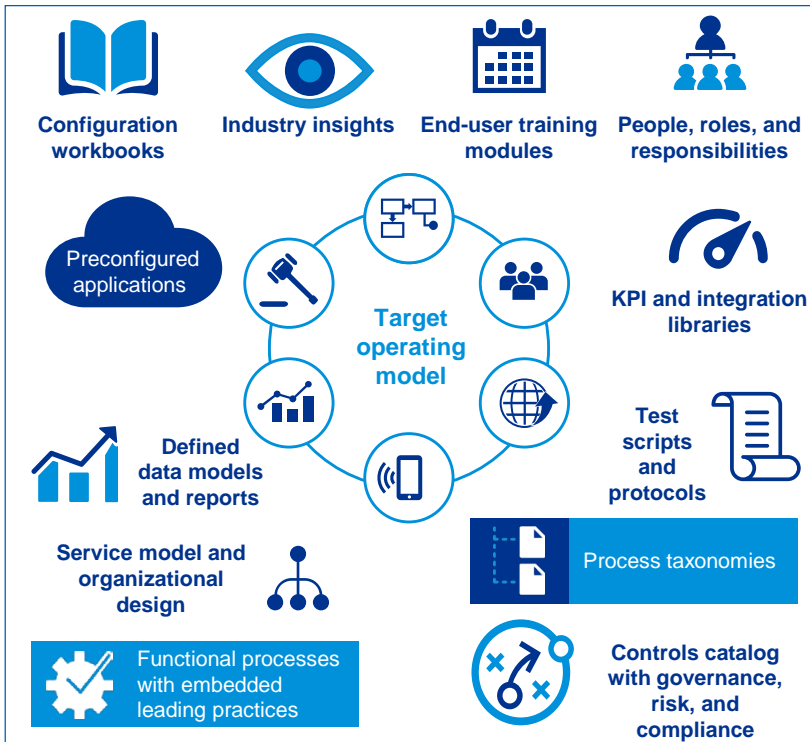
Powered Cyber enabled by Okta combines Okta's IDaaS platform with the KPMG Powered Enterprise methodology to accelerate the delivery of cloud access management programs and services. It is an outcome-driven transformation solution that enables you to prioritize and deliver IAM capabilities in a way that secures your most critical assets. In addition to being scalable and auditable, it provides an improved end-user experience.

What's in the box?


Powered Cyber provides a combination of leading practices and processes, tested technology solutions, and a next-generation delivery framework.

- The **Target Operating Model** shapes how transformation plays through every layer of your organization.
- The **Powered Execution Suite** is an integrated platform of next-generation tools to help deliver functional transformation.
- **Powered Evolution** provides access to specialized resources to drive continuing evolution.

The target operating model



 Federal Communications Commission (FCC) **cut costs by 83 percent** by moving to cloud-based identity.²

 **The FCC saved \$500,000** within the first nine months of using Okta due to their new seamless ability to log into the supplier's portal and order online.³

2. Source: Okta website

3. Source: Okta website

Some or all of the services described herein may not be permissible for KPMG audit clients and their affiliates or related entities.



kpmg.com/socialmedia

The information contained herein is of a general nature and is not intended to address the circumstances of any particular individual or entity. Although we endeavor to provide accurate and timely information, there can be no guarantee that such information is accurate as of the date it is received or that it will continue to be accurate in the future. No one should act upon such information without appropriate professional advice after a thorough examination of the particular situation.

© 2020 KPMG LLP, a Delaware limited liability partnership and the U.S. member firm of the KPMG network of independent member firms affiliated with KPMG International Cooperative ("KPMG International"), a Swiss entity. All rights reserved. NDP097264-1C

The KPMG name and logo are registered trademarks or trademarks of KPMG International.

With KPMG Powered Enterprise | Cyber enabled by Okta you can:

- **Transform** the way you run your business
- Build **agile functions** that evolve as you grow
- Help your people **adopt and embrace change**
- **Exploit new technologies** for value and performance
- **Drive future success** with the latest leading practice

okta

To find out more about Powered Enterprise | Cyber and the impact it can have on your business, visit: www.kpmg.com/poweredyber.

What comes next is powered by KPMG.

To find out more about KPMG Powered Enterprise, please contact:

Jim Wilhelm

Principal, Cybersecurity Services
KPMG LLP

T: 267-256-7271

E: jameswilhelm@kpmg.com

Rahul Kohli

Principal, Cybersecurity Services
KPMG LLP

T: 313-230-3000

E: rahulkohli@kpmg.com

Juliet Hodder

Alliance Director
KPMG LLP

T: 510-378-6765

E: juliethodder@kpmg.com