

Managing global mobility risk

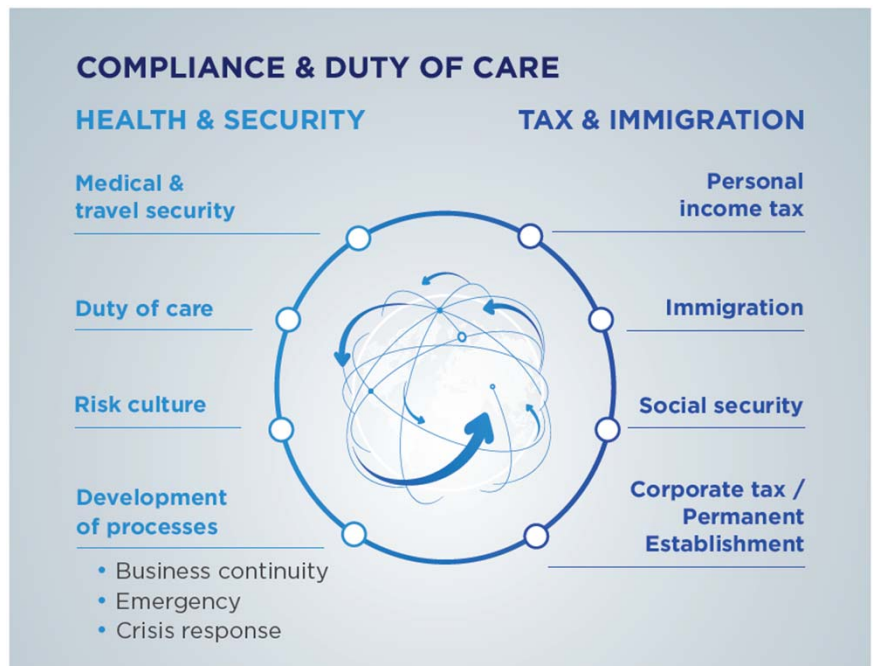
Streamline mobility risk management with KPMG and International SOS

The alliance between KPMG LLP and International SOS enables us to assist managers of travel, global mobility, human capital, and international tax to address both the personal and financial risks related to global mobility.

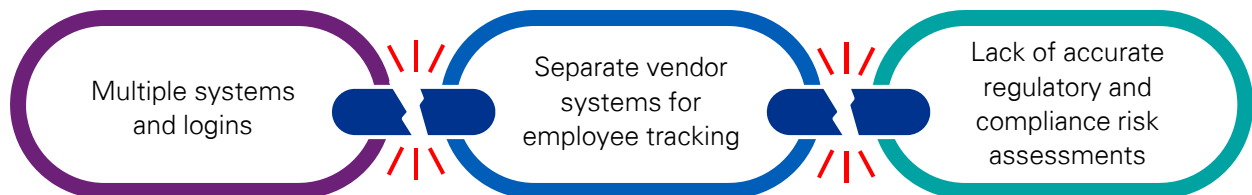


In today's world, employee mobility brings increasing risk. Companies today are under greater scrutiny from global tax and immigration authorities and face higher expectations from key talent leadership to safeguard the health, safety, and security of employees.

With complementary services and technology for managing risk, tax compliance, and duty-of-care obligations, KPMG and International SOS enable global organizations to take a holistic approach to employee mobility management.



Without a holistic approach, internal systems and processes struggle to address these risks due to:



With integrated, modern tools to track travel, the joint solution from KPMG and International SOS improves the mobile employee experience. Global companies also benefit from enhanced compliance reporting, visibility of mobile populations, increased compliance, and lower tax risk. Contact KPMG to learn more about how to streamline and strengthen your mobility programs.

KPMG: Aligning your global workforce with business strategy

KPMG's Global Mobility Services (GMS) practice builds on deep experience in tax, technology, immigration, compensation and benefits, and mobility administration to make managing your global workforce easier, safer, and more efficient. Our teams apply advanced data and analytic techniques to drive deeper insights and enable you to make evidence-based decisions using up-to-date data.



International SOS: Protecting people, managing risk

By providing aid—whether administrative, medical, or emergency—to the international travelers and employees of multinational companies, International SOS makes it easier for businesses to work and grow globally.

These duty-of-care services range from helping to replace a stolen passport, finding experienced translators, providing vital medical services and prescriptions, or airlifting stranded travelers from danger. With security and medical experts across more than 800 locations in 85 countries, International SOS can quickly respond to any emergency.

A joint solution to streamline and strengthen mobility programs

The alliance between KPMG and International SOS helps multinational organizations build safe, strong mobility programs while also improving efficiency through data exchange and system integration.

By leveraging the same client integrations across KPMG and International SOS, your mobile employees' data need only be collected once for downstream processing by both companies.

Using a single data source, KPMG GMS professionals will tackle risk assessments across a number of areas (e.g., personal tax and social security, immigration, EU posted worker registration and corporate tax/permanent establishment), while International SOS uses the same data to deliver health and safety information.

With strong credentials in global mobility, KPMG and International SOS can help our clients to build safe and robust mobility programs based on leading practices around mobility risk mitigation and compliance.

Contact us

To learn more about our services, please contact your local tax advisor or any of the professionals listed below.

Anne d'Arcy

Principal, Global Mobility Services, KPMG LLP

T: 212-954-4853

E: annedarcy@kpmg.com

Eric Scaringe

Senior Manager Global Mobility Services, KPMG LLP

T: 518 949 0781

E: escaringe@kpmg.com

About us

KPMG's Global Business Traveler Services help multinational companies be more proactive in mitigating compliance risks associated with domestic or international cross-border travelers

kpmg.com/socialmedia



Some or all of the services described herein may not be permissible for KPMG audit clients and their affiliates or related entities.

The information contained herein is of a general nature and is not intended to address the circumstances of any particular individual or entity. Although we endeavor to provide accurate and timely information, there can be no guarantee that such information is accurate as of the date it is received or that it will continue to be accurate in the future. No one should act on such information without appropriate professional advice after a thorough examination of the particular situation.

© 2020 KPMG LLP, a Delaware limited liability partnership and a member firm of the KPMG global organization of independent member firms affiliated with KPMG International Limited, a private English company limited by guarantee. All rights reserved. The KPMG name and logo are trademarks used under license by the independent member firms of the KPMG global organization. NDP123839-1A