



# KPMG Connected Enterprise | Technology

## Striving to remove the complexity from enterprise integration to help accelerate your success

### As enterprises continue their digital transformation journeys, their biggest challenge is data integration.

With business units moving too fast for traditional integration strategies, lack of middleware support for new integration design patterns, and a lack of standards for how interfaces are designed, developed and supported, digital transformation is proving elusive for many organizations.

The average enterprise spends approximately **\$3.5 million** per year on integration-related IT labor costs.



The importance of **integration** continues to increase, but challenges persist

On average, organizations generate **27%** of their revenue from APIs and related implementations.



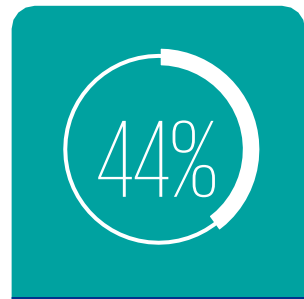
Organizations are embracing **APIs** for new integration projects

Only **18%** of organizations say they can integrate end-user experiences.



Data silos and legacy IT complicate **integration**

Some **36%** of organizations have a mature approach to API-led integration for nontechnical business users and **44%** are developing a strategy.



IT should meet the growing **integration** demands of business teams

Source: "Top 8 digital transformation trends shaping 2021", MuleSoft

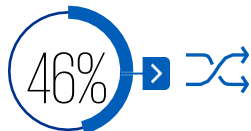
### Leveraging APIs to increase productivity, agility, and innovation

APIs are the glue that connect the digital world. For organizations to deliver digital transformation and innovate at the speed of market leaders, it is critical to discover, connect, and reuse software assets using APIs.

Those that leverage APIs report an array of business results:



Increased productivity



Greater agility across teams to self-serve IT



Increased innovation

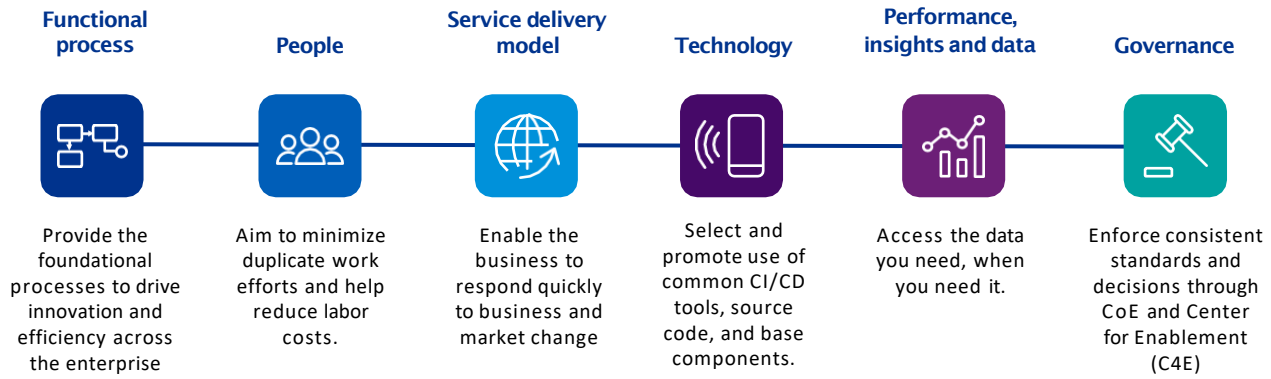
All of which serve to better connect and integrate the business.



APIs make it easier to integrate and connect people, places, systems, data, and algorithms, create new user experiences, share data and information, authenticate people and things, enable transactions and algorithms, leverage third-party algorithms, and create new product/ services and business models.

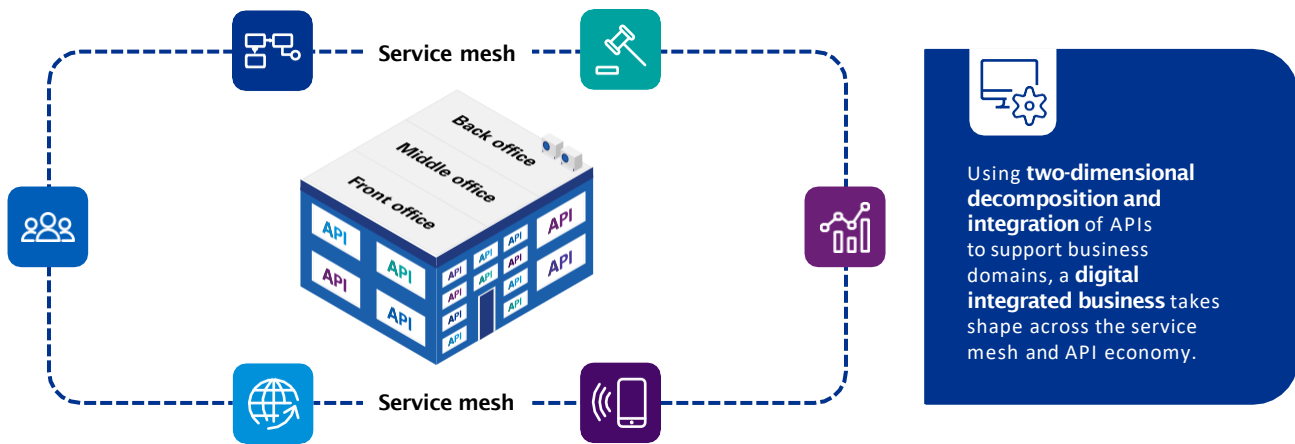
Source: "What is the API Economy (Application Programming Interface Economy)", MuleSoft

## The next generation of integration is no longer just about connecting systems

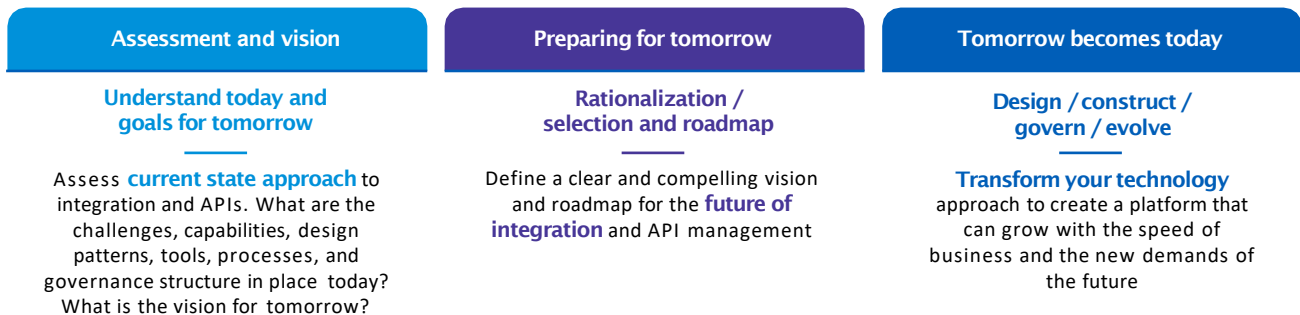


A digital business requires a connected enterprise across all layers of the operating model

With Connected Technology, enterprise integration unifies across front, middle and backoffice.



### KPMG firms' capabilities help transform data integration



KPMG professionals can support your needs, regardless of your size



#### Global Technology Consulting

##### Todd J Lohr

Lead, Global and US for Technology Consulting and Global Lighthouse  
KPMG International  
[tlohr@kpmg.com](mailto:tlohr@kpmg.com)

#### Enabler Team Regional Leads

##### Americas

##### Miguel Chavez

Director  
Digital Lighthouse  
KPMG in the US  
[miguelchavez@kpmg.com](mailto:miguelchavez@kpmg.com)

##### Brian LaHiff

Managing Director  
Digital Lighthouse  
KPMG in the US  
[blahiff@kpmg.com](mailto:blahiff@kpmg.com)

##### Robert Guy

Director  
Digital Lighthouse  
KPMG in the US  
[robertguy2@kpmg.com](mailto:robertguy2@kpmg.com)

#### Lighthouse Leadership

##### Matteo Colombo

Advisory Principal  
KPMG in the US  
[matteocolombo@kpmg.com](mailto:matteocolombo@kpmg.com)

##### Louise Krieger

Associate Director  
KPMG in the US  
[lhkrieger@kpmg.com](mailto:lhkrieger@kpmg.com)

#### ASPAC

##### Diego Viana

Director  
Management Consulting  
KPMG Australia  
[dviana1@kpmg.com.au](mailto:dviana1@kpmg.com.au)

[home.kpmg/social](https://home.kpmg/social)

The information contained herein is of a general nature and is not intended to address the circumstances of any particular individual or entity. Although we endeavor to provide accurate and timely information, there can be no guarantee that such information is accurate as of the date it is received or that it will continue to be accurate in the future. No one should act on such information without appropriate professional advice after a thorough examination of the particular situation.

The KPMG name and logo are trademarks used under license by the independent member firms of the KPMG global organization.

Some or all of the services described herein may not be permissible for KPMG audit clients and their affiliates or related entities.

